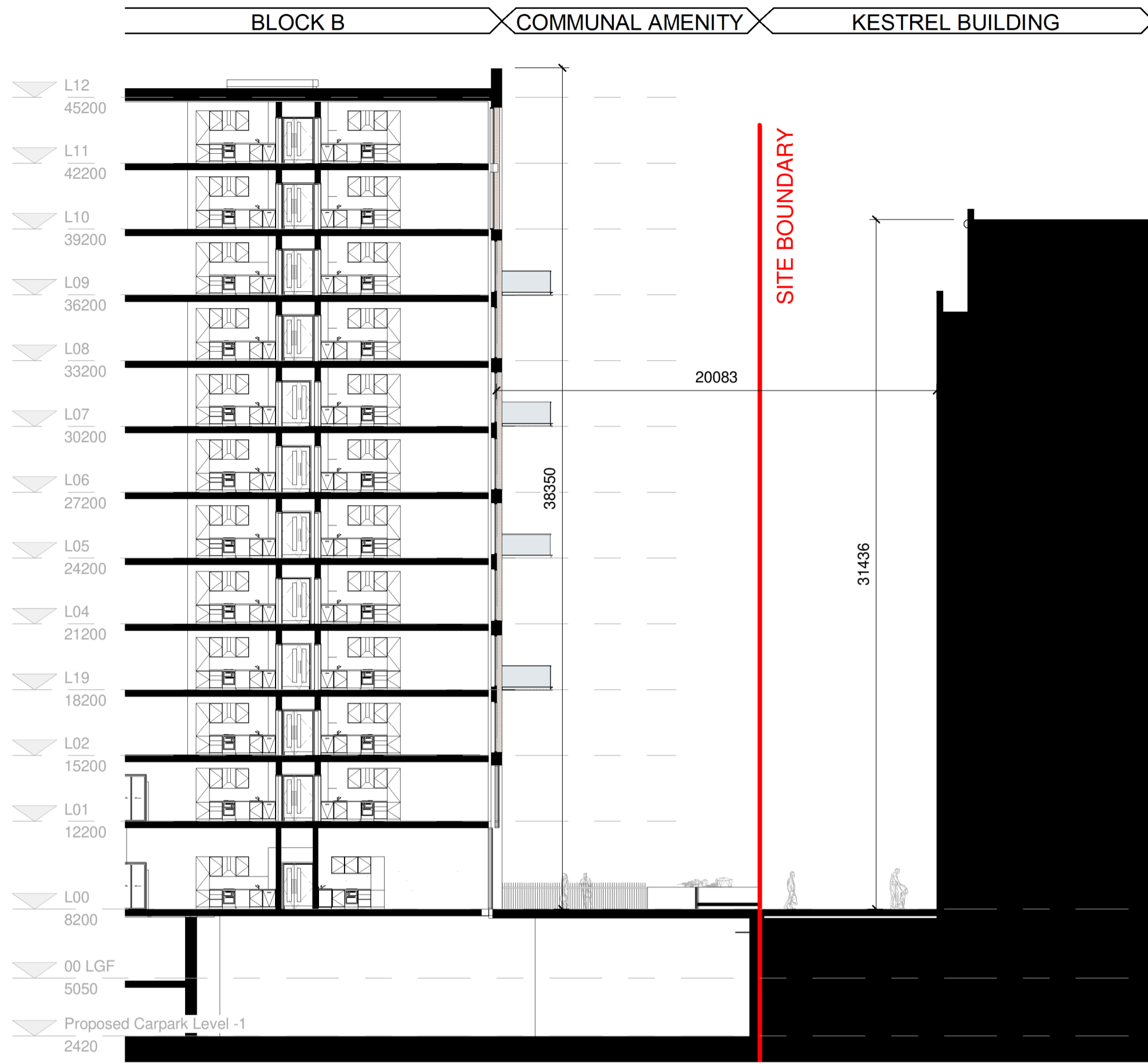
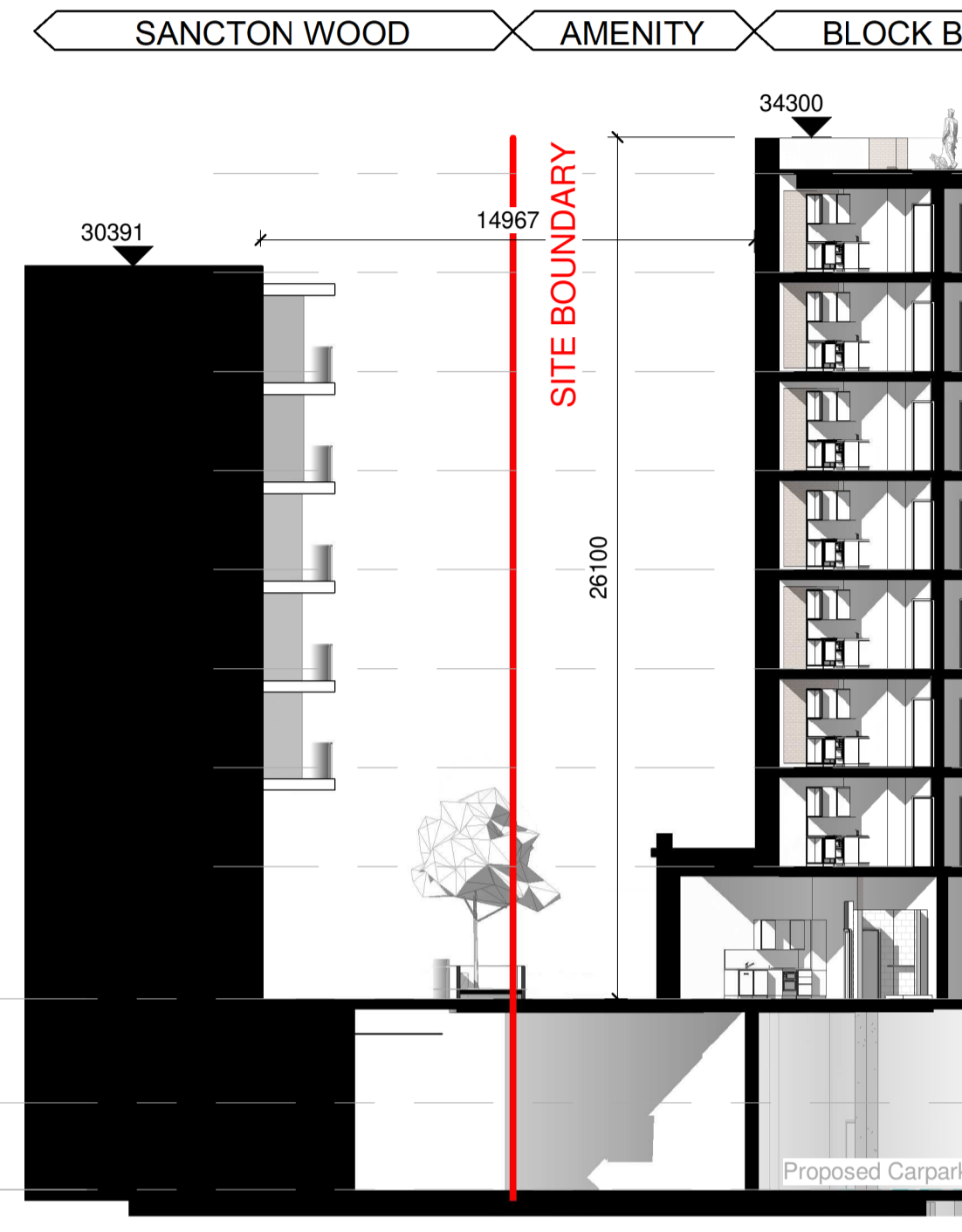


FOR INFORMATION

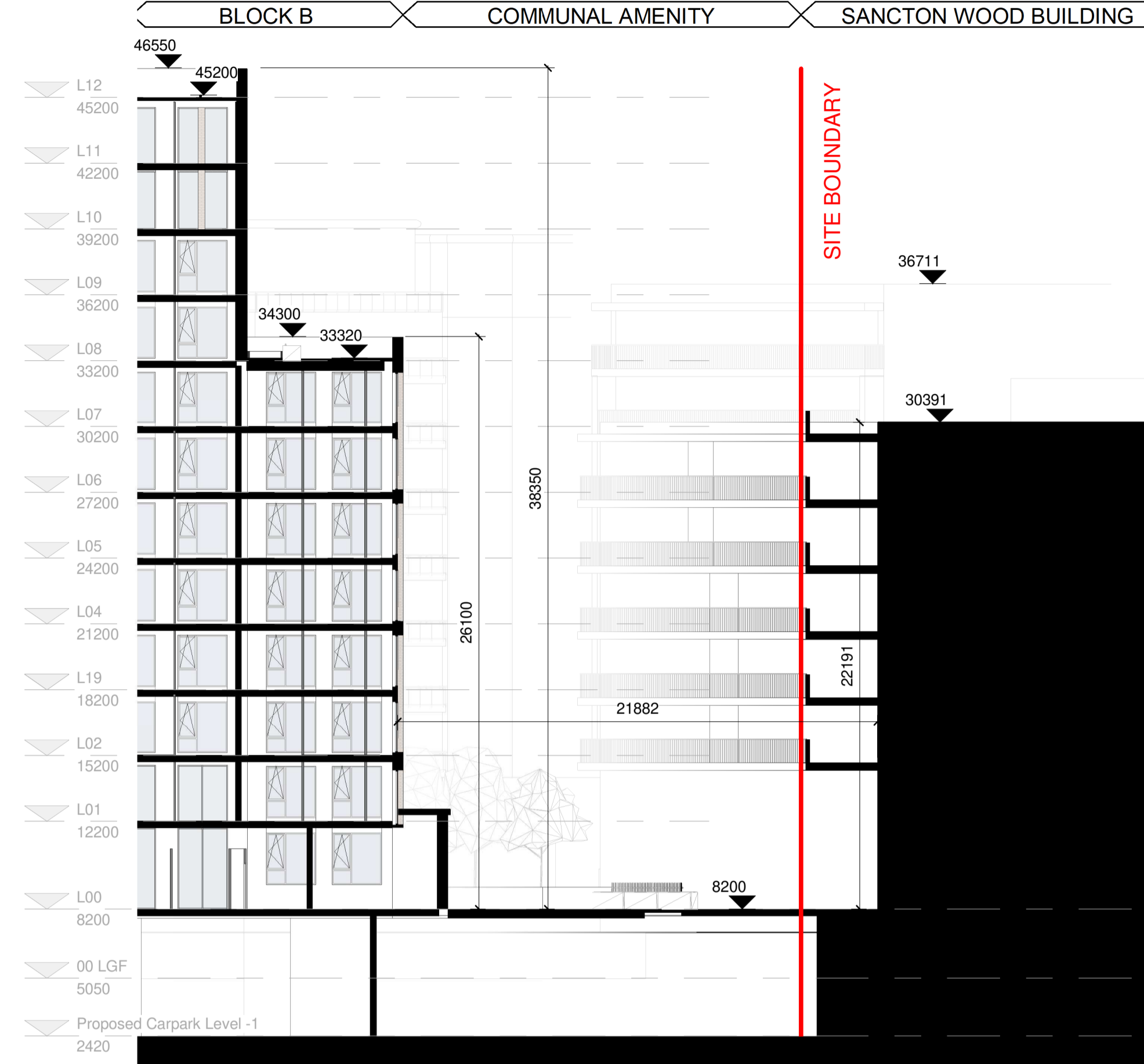
IN RESPONSE TO ABP OPINION ITEM 3(b)



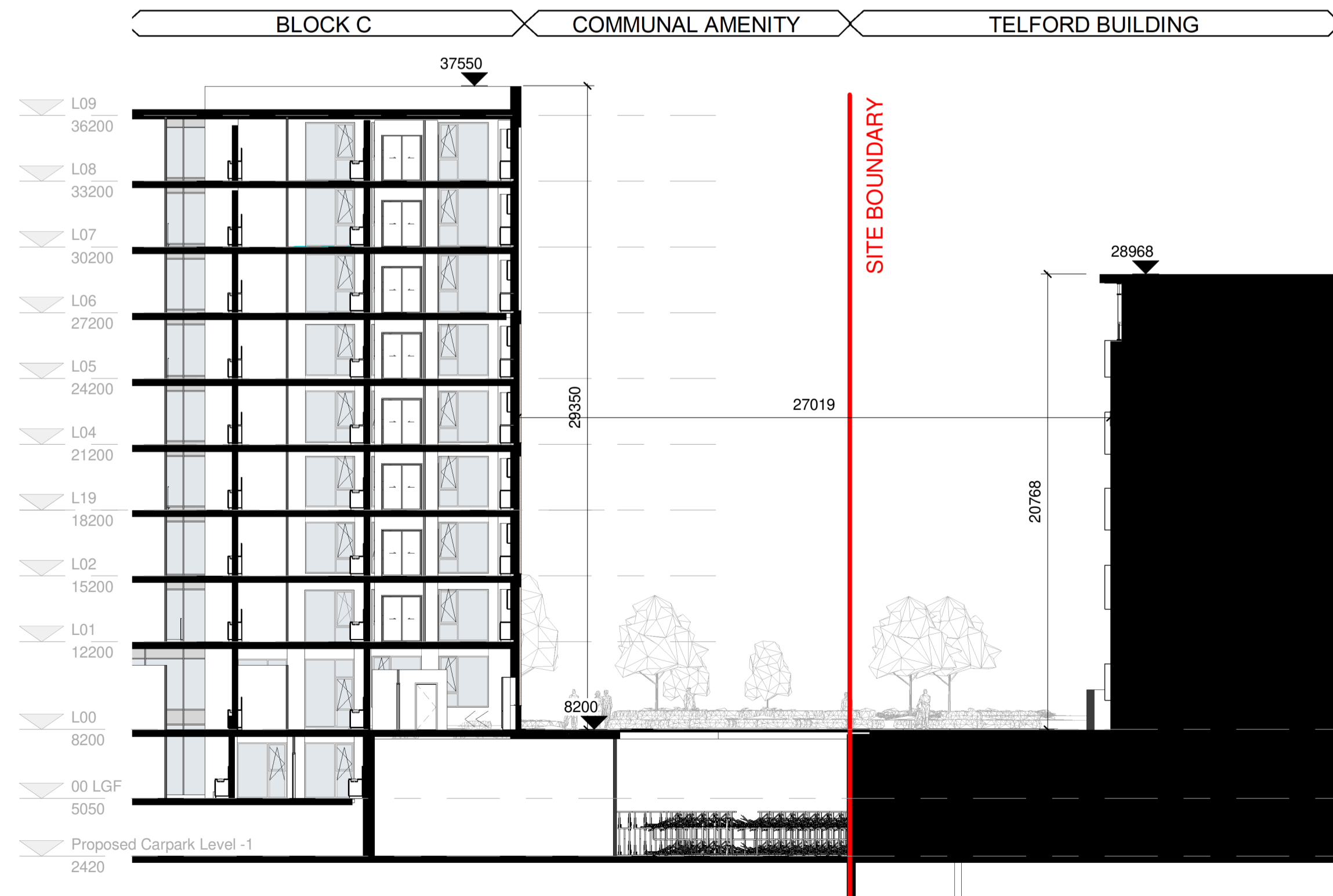
A-A
1:200



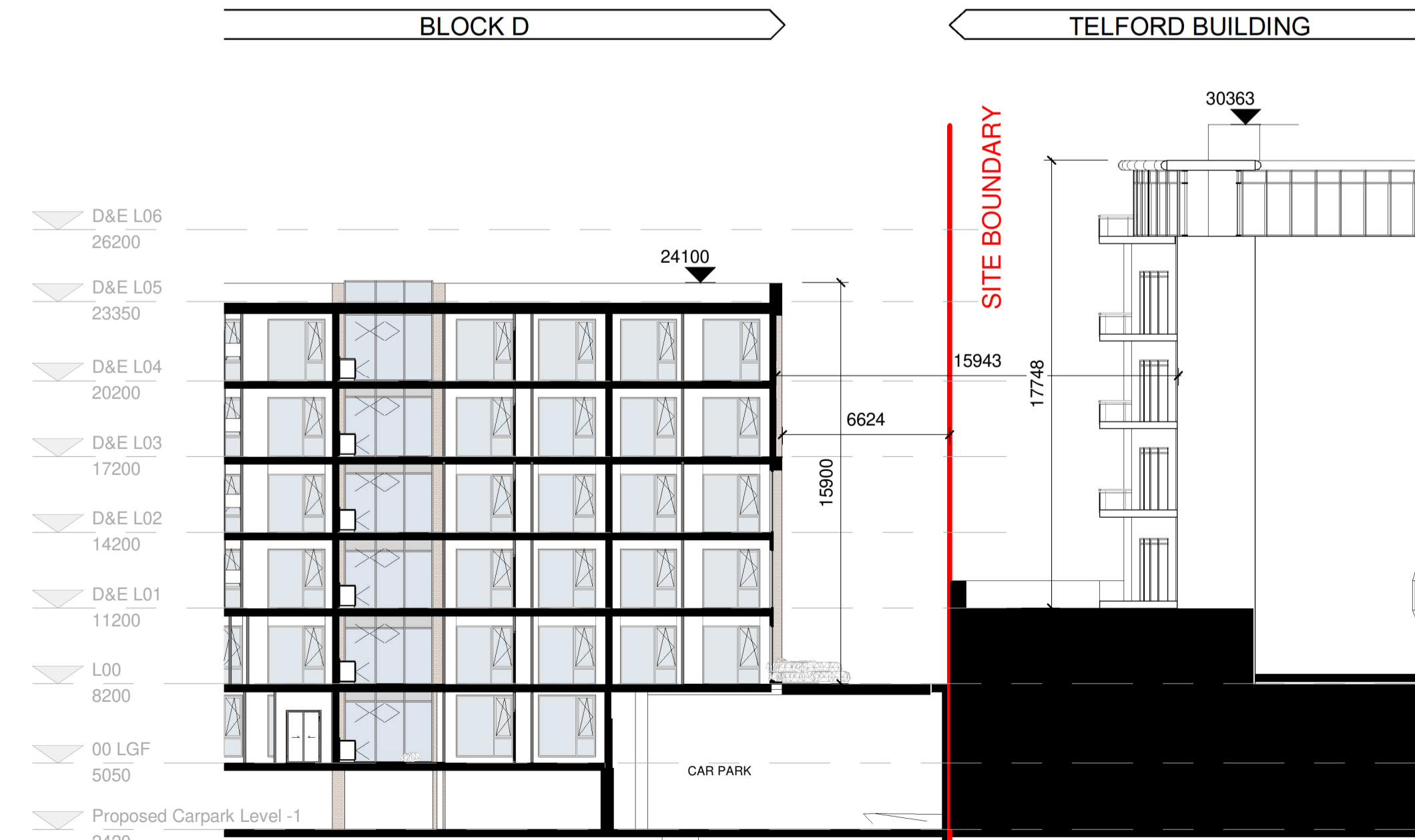
B-B
1:200



C-C
1:200



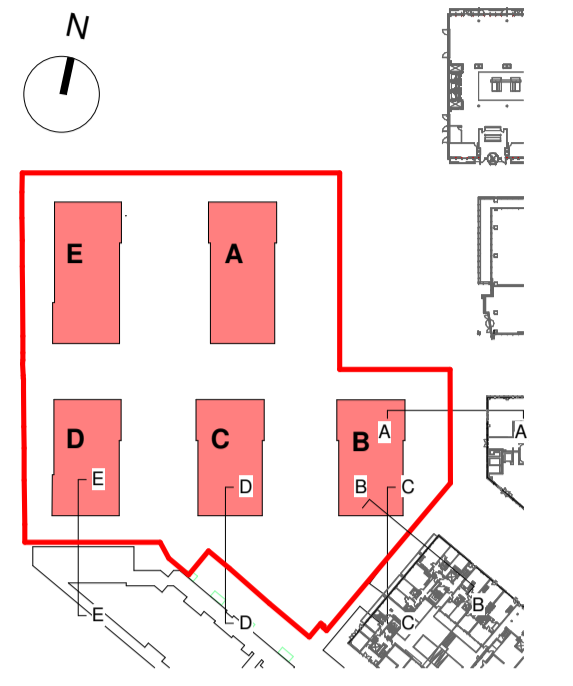
D-D
1:200



E-E
1:200

Notes:
 - Do not scale from this drawing. Use figured dimensions in all cases.
 - Verify dimensions on site and report any discrepancies to the Architect immediately.
 - This drawing is to be read in conjunction with the Architect's Specification.
 - © This drawing is copyright and may only be reproduced with the Architect's permission.

Drawing Notes:



KEY PLAN

Rev.	Date	Drawn	Details of Issue / Revision
P01	02/07/21	EOB	Issued for Planning

Issues & Revisions



W: www.reddyarchitecture.com
 E: info@reddyarchitecture.com

Client Details:
HPREF HSQ Investments Limited

Project Details:
HSQ Feasibility
 Heuston South Quarter, St John's Rd W,
 Kilmainham, Dublin 8

Drawing Title:
Proposed Section 06

Job No. P19-213D	Sheet Size A1	Scale @A1: 1:200
Issue Date: 17/09/21	Drawn By: IOB	Reviewed By: EOB

Status HSQ	Purpose of Issue Planning Permission
Project-Originator-Zone-Level-Type-Role-Classification-Number RAU-ZZ-ZZ-DR-A-SEC-06306	
Revision P 01	